

## Constraints Study

A Constraints Study has been carried out to identify all factors that will influence the location and design of the project. The Constraints Study was the first stage in the Options Selection process and was carried out to identify the nature and extent of constraints within the study area of the proposed development. The Constraints Report has been used to inform the development of the long list of options. Key constraints include the River Slaney Special Area of Conservation which includes the Carrigowen River, several houses and residential properties and several agricultural and cultural heritage sites.

The Constraints Study Report outlined the key environmental constraints, including physical (e.g. mountains, rivers, lakes) and environmental constraints (e.g. biodiversity, landscape and visual, cultural heritage, population, and agricultural land), that have the potential to affect the design and location of the road. The report will also identify the towns, villages, desirable amenities, and points of interest along the N81. This report will in turn inform the identification of the preferred options.

## Scheme Options

A Feasibility Study carried out by the Kildare National Roads Office identified eight locations within the study areas where an intervention may be required. These are:

### N81 Whitestown Lower Project

- Castleruddery Junction (N81, L4312, L8312, and the entrance to the sand and gravel quarry)
- R412 Junction, Ballylion
- Whitestown Straight (the straight between the two aforementioned junctions)

### N81 Hangman's Bend and Tuckmill Project

- Raheen Straight (750m straight immediately north of Raheen Junction)
- Eldon Bridge
- L3290 Junction
- Tuckmill Crossroads
- Hangman's Bend, Saundersgrove

**Stage 1** preliminary options were developed for each of these locations. These options considered interventions of different scales ranging from do nothing / do minimum options to larger scale realignments. The preliminary options were reduced to a shortlist of options via an initial sifting process followed by a Multi-Criteria Analysis (MCA) in accordance with TII's Project Management Guidelines (PMG), Project Appraisal Guidelines (PAG) and the Department of Transport's Transport Appraisal Framework (TAF). The appraisal criteria used in the shortlisting process fall under the following headings;



The **Stage 1** Preliminary Options Assessment has now been completed and has resulted in 16 improvement options and the Do-Minimum being taken forward to the Stage 2 Project Appraisal Matrix.

These options are typically shown as 100m wide corridors on the project drawings. These corridors do not represent the actual width of the proposed road developments or the lands to be acquired. The corridors simply indicate the lands within which a road alignment could feasibly be developed. Note, there is also facility for the public to view the options in more detail on the project website, [www.N81whitestownandtuckmill.ie](http://www.N81whitestownandtuckmill.ie).

## Your Feedback

Wicklow County Council now invites the residents of the local area, members of the public and other interested parties to offer comments and views on the route improvements identified along the N81. We would welcome your feedback on the options presented which you can submit online through our project website [www.N81whitestownandtuckmill.ie](http://www.N81whitestownandtuckmill.ie).

Any comments received at this first Public Consultation will be taken on board as part of the Stage 2 detailed appraisal process when refining the options and selecting the Preferred Options. A second public consultation will be held displaying the Emerging Preferred Options prior to finalising the option selection process. This first public consultation will run between **27<sup>th</sup> March 2024 and 26<sup>th</sup> April 2024**. Submissions can be made by email or in writing at the addresses below:



Senior Executive Officer,  
Transportation, Infrastructure Delivery & Emergency Services,  
Wicklow County Council  
County Buildings,  
Station Road,  
Wicklow Town,  
A67 FW98



[www.N81whitestownandtuckmill.ie](http://www.N81whitestownandtuckmill.ie)

### Please make your submission by the 26th of April 2024.

The first in person public consultation event will be held on **Wednesday the 27th of March 2024 from 2pm to 8pm in the Inis Fail Germaines, Main Street, Baltinglass, Co. Wicklow**, where members of the Project Team will be available to discuss any aspect of the Project.

## Next steps

Over the coming months, the Project Team will review and consider all submissions received following the first public consultation in response to the improvement Options. Each of the Options that is progressing to Stage 2 of the Option Selection process will be subject to the assessment criteria in accordance with the Transport Appraisal Framework (TAF) Criteria headings shown below. This will result in a Preferred Option.

	Transport User Benefits and Other Economic Impacts
	Accessibility Impacts
	Social Impacts
	Land Use Impacts
	Safety Impacts
	Climate Change Impacts
	Local Environmental Impacts

Transport Appraisal Framework Criteria

A second public consultation shall be held displaying the Emerging Preferred Options prior to finalising the option selection process. The Project Team will then further develop the design, undertaking additional environmental and technical surveys and assessments. This process will culminate in the publication of the Statutory Orders and applicable Environmental Report(s) in accordance with relevant legislation for the Development consent processes.

# N81 ROUTE IMPROVEMENT WORKS

## N81 Whitestown Lower Project and N81 Hangman's Bend and Tuckmill Project



## PUBLIC CONSULTATION 1 CONSTRAINTS & OPTIONS SELECTION



Tionscadal Éireann  
Project Ireland  
**2040**



An Roinn Iompar  
Department of Transport

## Introduction

Wicklow County Council is currently progressing two separate projects on the N81 in parallel; the N81 Whitestown Lower Project and the N81 Hangman's Bend and Tuckmill Project, which aim to address road deficiencies contributing to the poor road safety record on the network.

The N81 Whitestown Lower Project study area is approximately 2km long extending from the Castleruddery Junction to the Ballylion Junction to the north.

The N81 Hangman's Bend Scheme and Tuckmill Project study area is approximately 4km long extending from Raheen Junction to the south to Hangman's Bend to the north.

### Need for Project / Project Background

The 12km section of the N81 between Merginstown crossroads (The Old Tollhouse) and the urban speed limit zone entering Baltinglass has a poor road safety record.

Kildare National Roads Office prepared a Feasibility Report for four N81 projects in October 2022. These were the N81 Tuckmill Lower, N81 Hangman's Bend, N81 Whitestown Lower and N81 Irishtown West. It was decided to progress the scheme to PMG Phase 2 as two projects based on the findings of the study. These are the N81 Whitestown Lower and N81 Hangman's Bend and Tuckmill Projects.

## Project Phases



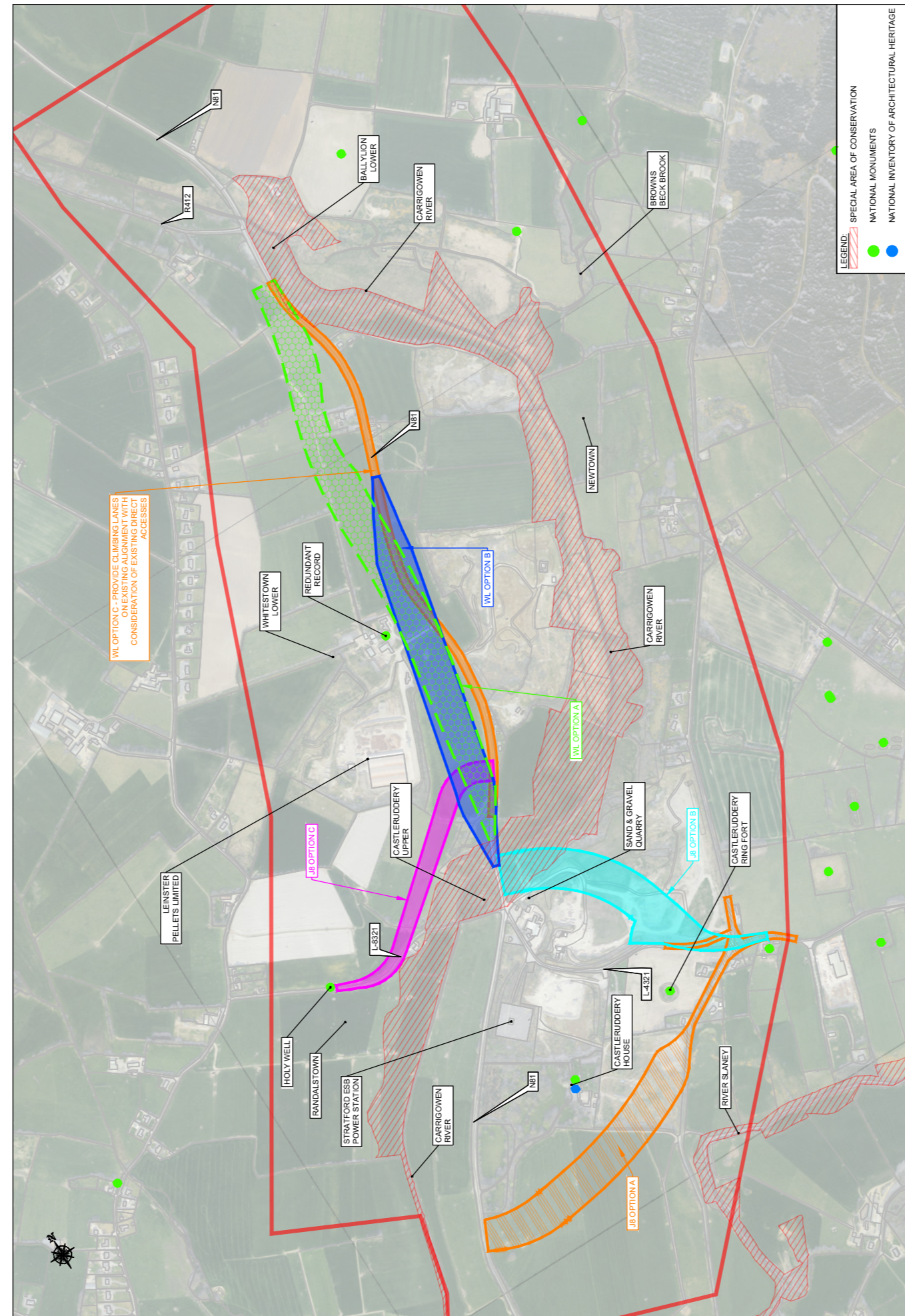
## Public Consultation: Constraints and Options Selection

The purpose of this information leaflet is to inform the public of the N81 Whitestown Lower Project and the N81 Hangman's Bend to Tuckmill Project and to invite submissions on constraints and the options being considered.

Wicklow County Council, with Roughan & O'Donovan Consulting Engineers appointed as technical advisors, are currently progressing the N81 route improvement study through the Phase 2 Options Selection Stage.



## Section 1: N81 Whitestown Lower Project



## Section 2: Hangman's Bend and Tuckmill

